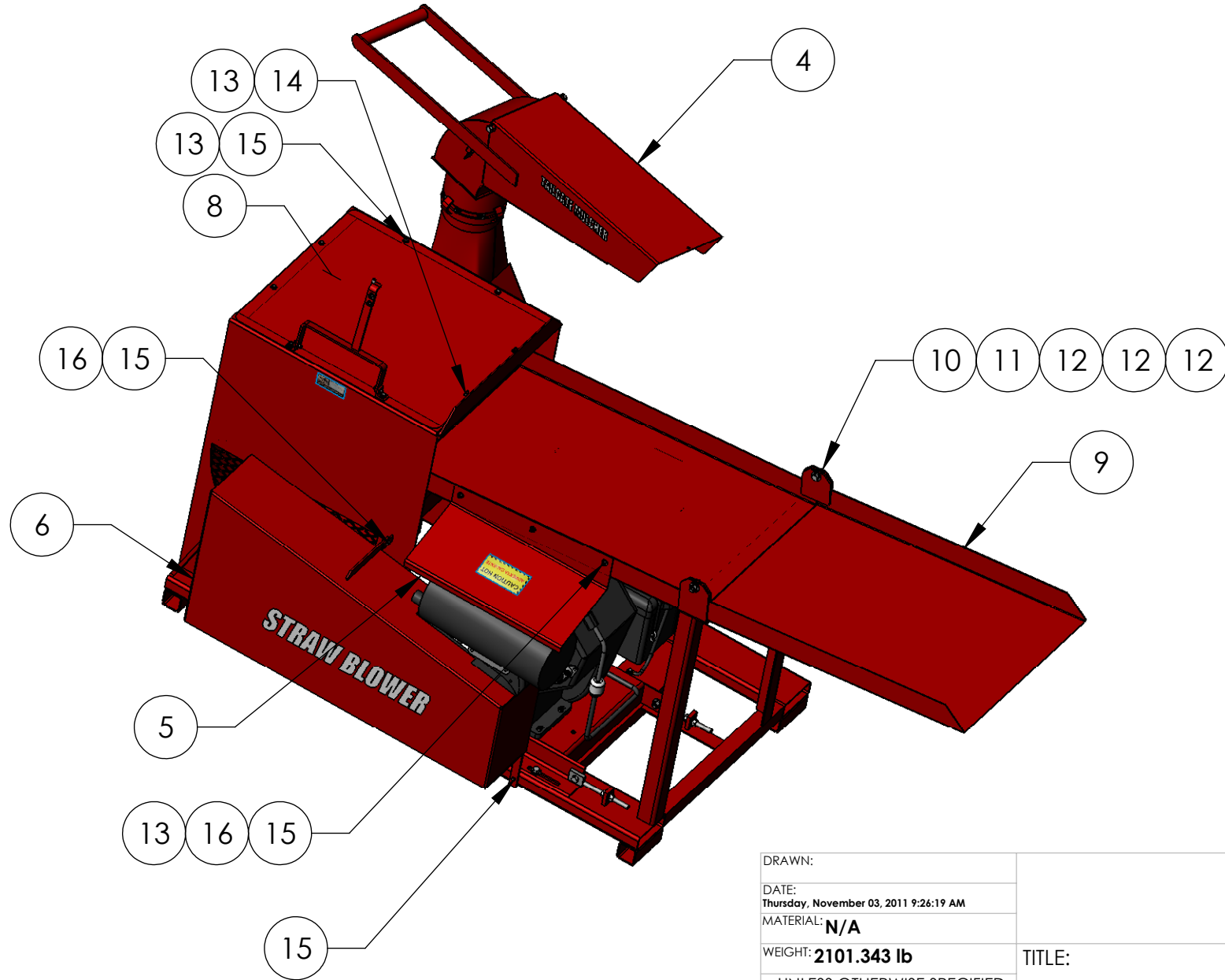


PROJECT:



PROPRIETARY AND CONFIDENTIAL
 THE INFORMATION CONTAINED IN THIS
 DRAWING IS THE SOLE PROPERTY OF
 TGM, INC. ANY REPRODUCTION IN
 PART OR AS A WHOLE
 WITHOUT THE WRITTEN PERMISSION OF
 TGM, INC. IS PROHIBITED.

DRAWN:
 DATE:
 Thursday, November 03, 2011 9:26:19 AM
 MATERIAL: **N/A**
 WEIGHT: **2101.343 lb**
 UNLESS OTHERWISE SPECIFIED:
 DO NOT SCALE DRAWING
 DIMENSIONS ARE IN INCHES
 TOLERANCES
 ANGULAR: $\pm 1^\circ$
 TWO PLACE DECIMAL $\pm .060$
 THREE PLACE DECIMAL $\pm .030$
 OVER 72.00 INCHES $\pm .12$
 REMOVE ALL BURRS, BREAK EDGES
 .005 TO .015, MACHINING SURFACE
 250 MICRO INCHES

TGMI, Inc.
 955 West Prairie Drive
 Sycamore, IL 60178
 (800) 241-8464

TITLE:
TGM35

ITEM NUMBER:
TGM35

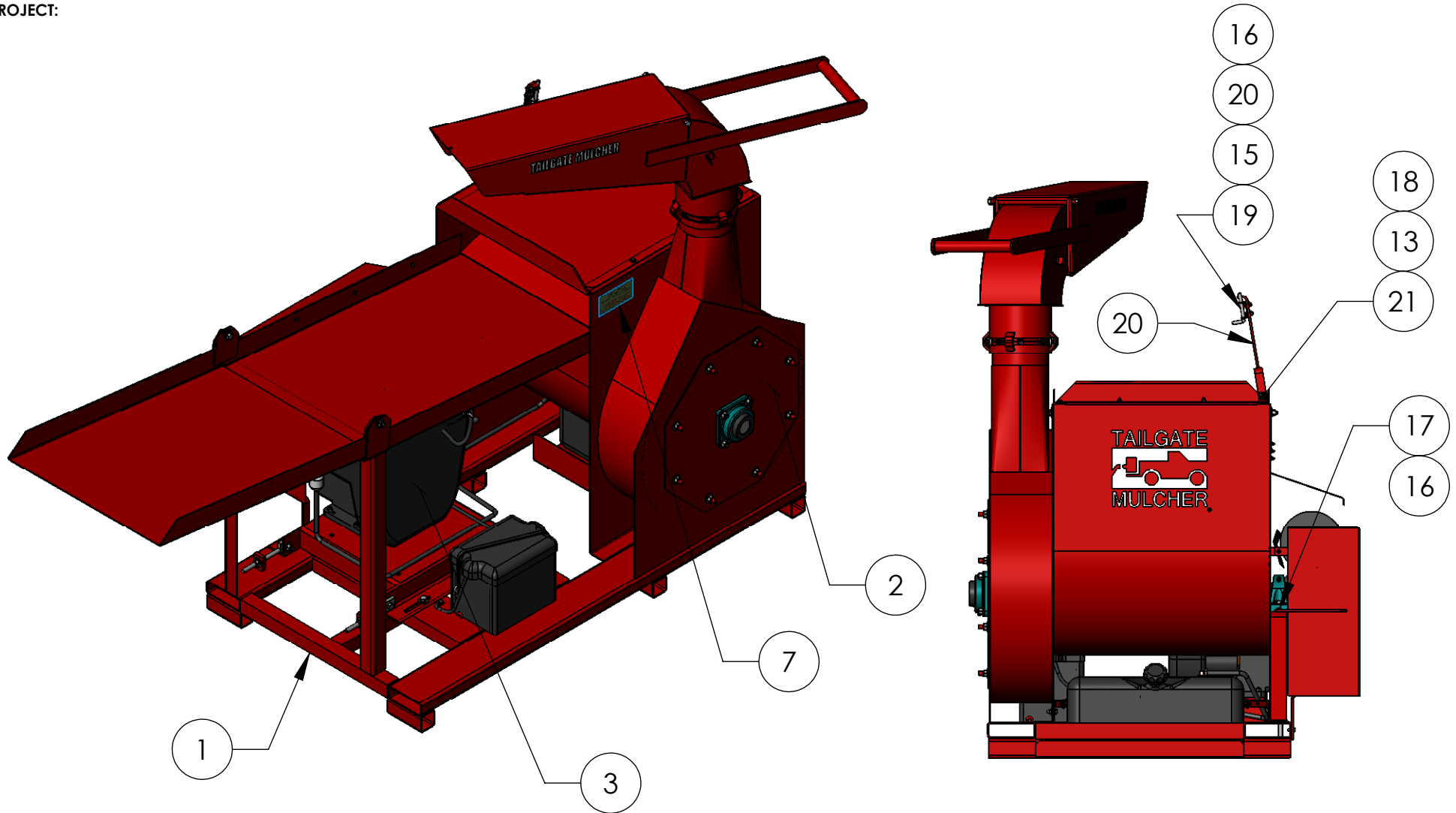
REV: **A** WC:

SCALE: 1:18

SIZE: **A**

SHEET 1 OF 3

PROJECT:



DRAWN:
 DATE:
 Thursday, November 03, 2011 9:26:19 AM
 MATERIAL: **N/A**

WEIGHT: **2101.343 lb**

UNLESS OTHERWISE SPECIFIED:
 DO NOT SCALE DRAWING

DIMENSIONS ARE IN INCHES
 TOLERANCES
 ANGULAR: $\pm 1^\circ$
 TWO PLACE DECIMAL $\pm .060$
 THREE PLACE DECIMAL $\pm .030$
 OVER 72.00 INCHES $\pm .12$

REMOVE ALL BURRS, BREAK EDGES
 .005 TO .015, MACHINING SURFACE
 250 MICRO INCHES

TGMI, Inc.
 955 West Prairie Drive
 Sycamore, IL 60178
 (800) 241-8464

TITLE:
TGM35

ITEM NUMBER:
TGM35

SCALE: 1:18

REV: **A** WC:

SIZE: **A**

SHEET 2 OF 3

PROPRIETARY AND CONFIDENTIAL
 THE INFORMATION CONTAINED IN THIS
 DRAWING IS THE SOLE PROPERTY OF
 TGMI, INC. ANY REPRODUCTION IN
 PART OR AS A WHOLE
 WITHOUT THE WRITTEN PERMISSION OF
 TGMI, INC. IS PROHIBITED.

PROJECT:

ITEM NO.	Number	DESCRIPTION	QTY
1	W10069	Frame, TGM35	1
2	A10001	Install, Beater&Assembly, TGM35	1
3	A10037	Install,PowerSystem,Kohler 35hp	1
4	A10002	Install, Cannon Discharge, TGM35	1
5	10076	Sheet, Muffler, Guard, Kohler	1
6	W10073	Belt, Guard TGM35	1
7	A10003	Install, Sticker&Plate, TGM35	1
8	10411	Plate,Guard,Top Cover, TGM35	1
9	W10072	Tray, Folding, TGM35	1
10	P10007	Screw, Hex, 1/2-13x1.5, ZP GR5	2
11	P10028	Nut, 1/2-13, Dfrmlock, ZP, GR5	2
12	P10008	Washer, 1/2, Wide, ZP, GR6	6
13	P10010	Washer, 1/4, Standard, ZP, GR5	21
14	P10011	Nut, 1/4-20, ZP, GR6	2
15	P10054	Screw, Hex, 1/4-20x1.0, ZP GR5	13
16	P10036	Nut, 1/4-20, Nylock, ZP, GR5	9
17	P10121	Screw, Hex, 1/4-20 x 2, ZP GR5	1
18	10430	Angle,CannonHolder	2
19	P10129	Latch, Bolt, Spring Closed	1
20	W10077	Cannon,Holder,TGM35	1
21	P10026	Screw, Hex, 1/4-20x1.0, ZP GR5	2

DRAWN:

DATE:

Thursday, November 03, 2011 9:26:19 AM

MATERIAL: **N/A**

WEIGHT: **2101.343 lb**

UNLESS OTHERWISE SPECIFIED:
DO NOT SCALE DRAWING

DIMENSIONS ARE IN INCHES
TOLERANCES

ANGULAR: $\pm 1^\circ$
TWO PLACE DECIMAL $\pm .060$
THREE PLACE DECIMAL $\pm .030$
OVER 72.00 INCHES $\pm .12$

REMOVE ALL BURRS, BREAK EDGES
.005 TO .015, MACHINING SURFACE
250 MICRO INCHES

TGMI, Inc.
955 West Prairie Drive
Sycamore, IL 60178
(800) 241-8464

TITLE:

TGM35

ITEM NUMBER:

TGM35

REV:

A

WC:

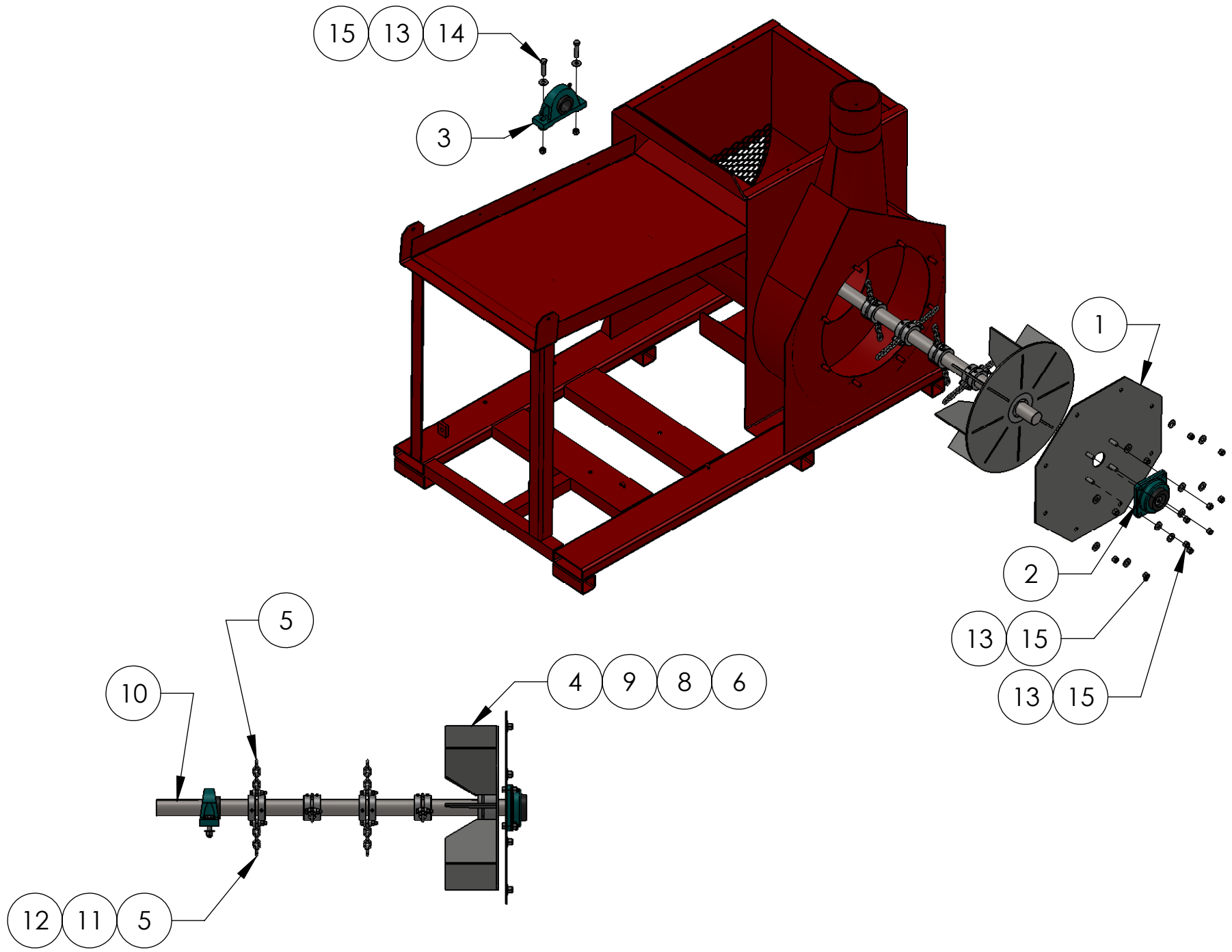
SCALE:1:48

SIZE: **A**

SHEET 3 OF 3

PROPRIETARY AND CONFIDENTIAL

THE INFORMATION CONTAINED IN THIS
DRAWING IS THE SOLE PROPERTY OF
TGMI, INC. ANY REPRODUCTION IN
PART OR AS A WHOLE
WITHOUT THE WRITTEN PERMISSION OF
TGMI, INC. IS PROHIBITED.



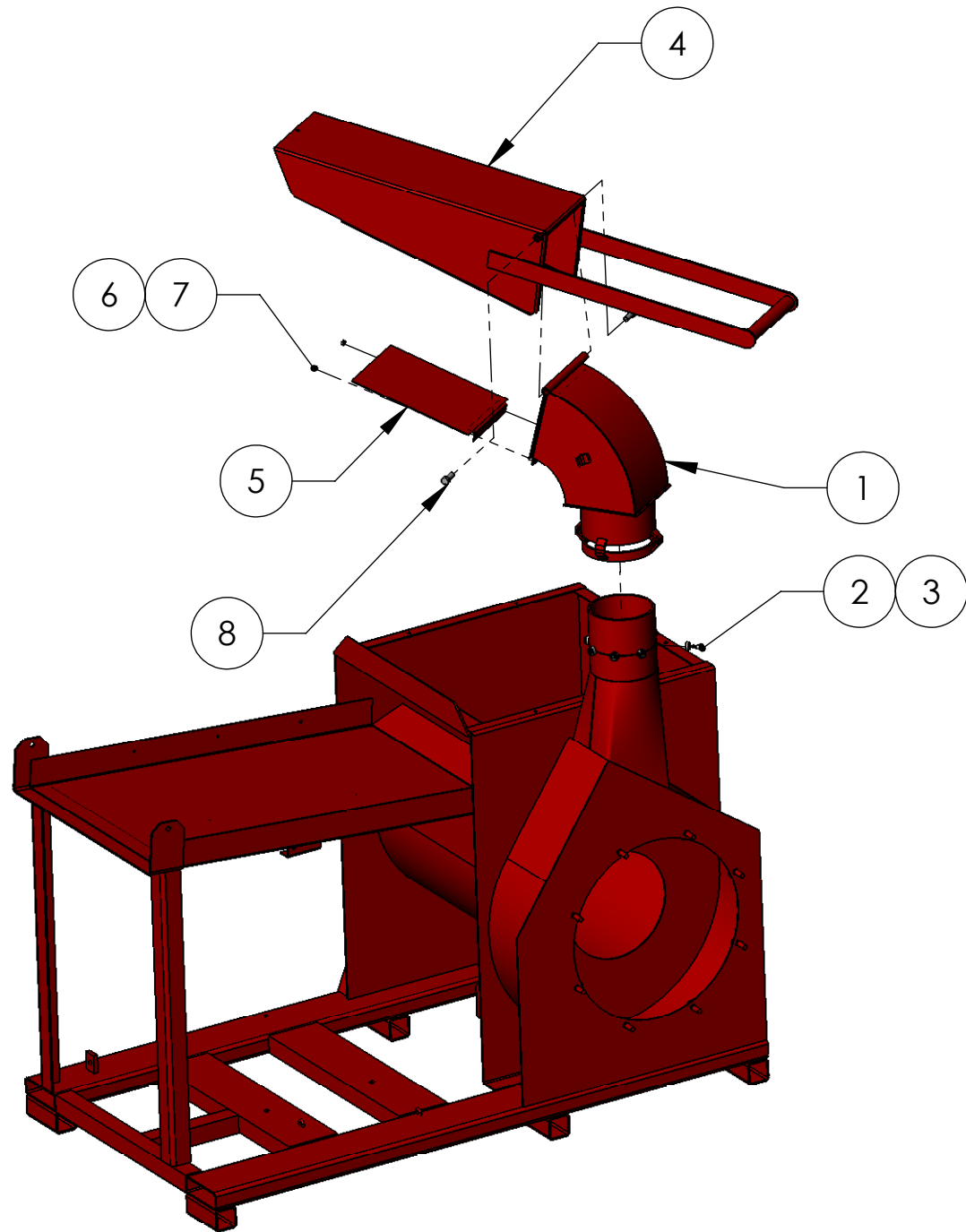
PROJECT:

ITEM NO.	Number	DESCRIPTION	BOM/QTY.
1	W10068	Fan, Cover TGM35	1
2	P10205	Bearing, Flange, 1-15/16, 4-Bolt	1
3	P10206	Bearing, Flange, 1-15/16, 2-Bolt	1
4	W10067	Fan, 20"Dia, 8 Blade	1
5	P10204	Chain, 5 Links	8
6	10028	Key, 3/8 x 1-1/2	1
7	W10066	Bracket, Beater Chain, 1 15/16	8
8	10027	Key, 3/8 x 1-1/2	1
9	P10209	Taper Lock, QD, SF 1-15/16 Bore	1
10	10379	Shaft, Drive, 1-15/16Dia	1
11	P10022	Screw, Hex, 3/8-24x1.75, ZP GR8	8
12	P10023	Nut, 3/8-24, Nylock, ZP, GR8	8
13	P10008	Washer, 1/2, Wide, ZP, GR6	16
14	P10067	Screw, Hex, 1/2-13x2.25, ZP GR5	2
15	P10009	Nut, 1/2-13, Nylock, ZP, GR5	14

DRAWN:	TGMI, Inc. 955 West Prairie Drive Sycamore, IL 60178 (800) 241-8464
DATE: Tuesday, April 19, 2011 11:04:25 AM	
MATERIAL:	
WEIGHT: 1b	TITLE:
<u>UNLESS OTHERWISE SPECIFIED:</u> DO NOT SCALE DRAWING	Install, Beater&Assembly, TGM35
DIMENSIONS ARE IN INCHES TOLERANCES ANGULAR: $\pm 1^\circ$ TWO PLACE DECIMAL $\pm .060$ THREE PLACE DECIMAL $\pm .030$ OVER 72.00 INCHES $\pm .12$	ITEM NUMBER: A10001
REMOVE ALL BURRS, BREAK EDGES .005 TO .015, MACHINING SURFACE 250 MICRO INCHES	REV: A
	SCALE: 1:48
	SIZE: A
	SHEET 3 OF 3

PROPRIETARY AND CONFIDENTIAL
 THE INFORMATION CONTAINED IN THIS
 DRAWING IS THE SOLE PROPERTY OF
 TGMI, INC. ANY REPRODUCTION IN
 PART OR AS A WHOLE
 WITHOUT THE WRITTEN PERMISSION OF
 TGMI, INC. IS PROHIBITED.

WC:



PROJECT:

ITEM NO.	Number	DESCRIPTION	BOM/QTY.
1	W10074	Cannon,DischargeSpout,TGM35	1
2	P10057	Screw, Shoulder 3/8, 5/16-18	8
3	10085	Tube, Roller, 7/8OD x 3/8ID x 5/16"	8
4	W10076	Cannon,Spout,TGM35	1
5	W10075	Cannon,BottomPlate,TGM35	1
6	P10054	Screw, Hex, 1/4-20x1.0, ZP GR5	2
7	P10036	Nut, 1/4-20, Nylock, ZP, GR5	2
8	P10007	Screw, Hex, 1/2-13x1.5, ZP GR5	2

DRAWN:		TGMI, Inc. 955 West Prairie Drive Sycamore, IL 60178 (800) 241-8464	
DATE: Thursday, November 03, 2011 9:39:36 AM			
MATERIAL: N/A			
WEIGHT: 60.585 lb		TITLE:	
UNLESS OTHERWISE SPECIFIED: DO NOT SCALE DRAWING		Install, Cannon Discharge, TGM35	
DIMENSIONS ARE IN INCHES TOLERANCES ANGULAR: $\pm 1^\circ$ TWO PLACE DECIMAL $\pm .060$ THREE PLACE DECIMAL $\pm .030$ OVER 72.00 INCHES $\pm .12$		ITEM NUMBER:	
REMOVE ALL BURRS, BREAK EDGES .005 TO .015, MACHINING SURFACE 250 MICRO INCHES		A10002	
		SCALE:1:48	SIZE: A
		SHEET 3 OF 3	

PROPRIETARY AND CONFIDENTIAL
 THE INFORMATION CONTAINED IN THIS
 DRAWING IS THE SOLE PROPERTY OF
 TGMI, INC. ANY REPRODUCTION IN
 PART OR AS A WHOLE
 WITHOUT THE WRITTEN PERMISSION OF
 TGMI, INC. IS PROHIBITED.

PROJECT:	ITEM NO.	Number	DESCRIPTION	BOM/QTY.	ITEM NO.	Number	DESCRIPTION	BOM/QTY.
	26	P10011	Nut, 1/4-20, ZP, GR6	4	1	W10071	Engine Mount, TGM35	1
	27	P10010	Washer, 1/4, Standard, ZP, GR5	1	2	W10078	Clevis, 1/2-13 x 8.5"	2
	28	P10026	Screw, Hex, 1/4-20x1.0, ZP GR5	1	3	P10210	Engine, Kohler Command, Pro35	1
	29	P10036	Nut, 1/4-20, Nylock, ZP, GR5	3	4	P10211	Sheave,5V,SFBush,8 3/8OD	2
	30	P10027	Screw, Hex, 5/16-18x1-1/4, ZP GR5	4	5	P10209	Taper Lock, QD, SF 1-15/16 Bore	1
	31	P10065	Nut, 5/16-18, Nylock, ZP, GR5	4	6	10027	Key, 3/8 x 2	2
	32	P10064	Washer, 5/16, Wide, ZP, GR5	8	7	10028	Key, 3/8 x 1-1/2	2
	33	P10009	Nut, 1/2-13, Nylock, ZP, GR5	6	8	P10015	Taper Lock, QD, SF, 1-7/16 Bore	1
	34	P10007	Screw, Hex, 1/2-13x1.5, ZP GR5	4	9	P10202	Belt, Paired, RB90,5V-5BANDS	1
	35	P10008	Washer, 1/2, Wide, ZP, GR6	14	10	P10150	Tank, Fuel, Rectangle Plastic	1
	36	P10062	Nut, 1/2-13, ZP, GR5	4	11	10434	Plate,Formed,12gax1x5,Anchor	2
	37	P10001	Washer, 3/8, Wide, ZP, GR5	4	12	10435	Hose, Fuel, 1/4ID, TGM35	1
	38	P10136	Screw, Hex, 3/8-16x1.5, ZP GR5	4	13	P10175	Clamp, Hose, SAE#4, Worm Drive	2
	39	P10063	Nut, 3/8-16, Nylock, ZP, GR5	4	14	P10053	Cable, Throttle Control	1
	40	P10101	Screw, Hex, 1/2-13x3, ZP GR5	2	15	P10051	Cable, Choke	1
					16	P10052	Switch, Starter, Keyed	1
					17	P10056	Strap, Rubber, 12"	1
					18	P10049	Battery, Cable, 24"	1
					19	P10048	Battery, Cable, 12"	1
					20	P10047	Battery, Interstate, 12V	1
					21	P10033	Battery, Cover	1
					22	P10213	Muffler, Horizontal, CH940	1
					23	W10079	Adapter, Muffler, CH960, LH	1
					24	W10080	Adapter, Muffler, CH960, RH	1
					25	P10054	Screw, Hex, 1/4-20x1.0, ZP GR5	6

DRAWN:

DATE:

Wednesday, April 20, 2011 9:04:43 AM

MATERIAL:

WEIGHT: **1b**

UNLESS OTHERWISE SPECIFIED:
DO NOT SCALE DRAWING

DIMENSIONS ARE IN INCHES
TOLERANCES

ANGULAR: ±1°
TWO PLACE DECIMAL ±.060
THREE PLACE DECIMAL ±.030
OVER 72.00 INCHES ±.12

REMOVE ALL BURRS, BREAK EDGES
.005 TO .015, MACHINING SURFACE
250 MICRO INCHES



TGMI, Inc.
955 West Prairie Drive
Sycamore, IL 60178
(800) 241-8464

TITLE:

Install,PowerSystem,Kohler 35hp

ITEM NUMBER:

A10037

REV:

A

WC:

SCALE:1:32

SIZE: **A**

SHEET 3 OF 3

PROPRIETARY AND CONFIDENTIAL
THE INFORMATION CONTAINED IN THIS
DRAWING IS THE SOLE PROPERTY OF
TGMI, INC. ANY REPRODUCTION IN
PART OR AS A WHOLE
WITHOUT THE WRITTEN PERMISSION OF
TGMI, INC. IS PROHIBITED.