

PROJECT:				ITEM NO.	Number	DESCRIPTION	Default/QTY.
				1	W10052	Hopper And Frame, TGM800	1
				2	W10045	Bolt, 1/2-13 x 26"	1
25	P10065	Nut, 5/16-18, Nylock, ZP, GR5	23	3	10285	Tube, 1" OD, 23.75" LNG	1
26	P10010	Washer, 1/4, Standard, ZP, GR5	3	4	W10041	Cover, Hatch, Aqua TGM	1
27	P10026	Screw, Hex, 1/4-20x1.0, ZP GR5	3	5	P10092	Latch, Hood, Rubber T Handle 2-1/8	1
28	P10036	Nut, 1/4-20, Nylock, ZP, GR5	6	6	P10104	Filler, Oil Tank, Bayonet Style	1
29	P10027	Screw, Hex, 5/16-18x1-1/4, ZP GR5	4	7	P10105	Coupling, 3"FPT, Quick-Disc, Male	1
30	P10054	Screw, Hex, 1/4-20x1.0, ZP GR5	4	8	P10106	Coupling, 3", Quick-Disc, Female Cap	1
31	P10009	Nut, 1/2-13, Nylock, ZP, GR5	3	9	P10110	Reducing, Bushing, 1 1/2NPT x 1 1/4FPT	1
32	P10121	Screw, Hex, 1/4-20 x 2, ZP GR5	2	10	P10108	Coupling, 1 1/2"FPT, Quick-Disc, Female	1
33	P10102	Screw, Socket Head,#10-24x1/2,ZPGR5	8	11	W10048	Handle, Pump Speed, Aqua TGM	1
34	P10103	Nut, #10-24, Nylock, ZP, GR5	2	12	W10049	Extension, Pump Speed, Handle	1
35	P10101	Screw, Hex, 1/2-13x3, ZP GR5	2	13	P10129	Latch, Bolt, Spring Closed	1
36	A10026	Assembly, Water Pump System	1	14	P10142	Switch, Remote Solenoid, Receiver	1
37	A10024	Nozzle, Veejet, Aqua TGM	1	15	W10050	Step, Hydraulic Stand, Aqua TGM	1
38	A10029	Assembly, Hydraulics, TGM800	1	16	10310	Plate, Diamond,Landing,AquaTGM	1
39	P10185	Sticker, "800"	2	17	10311	Plate, 12ga, Rear Guard AquaTGM	1
40	A10030	Assembly, Agitator, TGM800	1	18	10306	Plate, 12ga, Guard Aqua Mulcher	1
41	A10031	Assembly,Power,K25HP,TGM800	1	19	P10154	Pipe, 3/4" NPT Plug, SQ Head	1
				20	P10178	Sticker, Aqua TGM Control Pannel	1
				21	P10176	Sticker, "AquaMulcher"	2
				22	A10023	Nozzle, Straight, Aqua TGM	1
				23	P10111	Screw, Hex, 5/16-18x3/4, ZP GR5	20
				24	P10064	Washer, 5/16, Wide, ZP, GR5	2

DRAWN:

DATE:

Tuesday, July 26, 2011 10:02:00 AM

MATERIAL: N/A

WEIGHT: 3309.593 lb

UNLESS OTHERWISE SPECIFIED:
DO NOT SCALE DRAWINGDIMENSIONS ARE IN INCHES
TOLERANCES

ANGULAR: ±1°

TWO PLACE DECIMAL ±.060

THREE PLACE DECIMAL ±.030

OVER 72.00 INCHES ±.12

REMOVE ALL BURRS, BREAK EDGES
.005 TO .015, MACHINING SURFACE
250 MICRO INCHES

TGMI, Inc.
955 West Prairie Drive
Sycamore, IL 60178
(800) 241-8464

TITLE:

800 Gallon, 25 HP Spray Tower

ITEM NUMBER:

TGM800

REV:

A

WC:

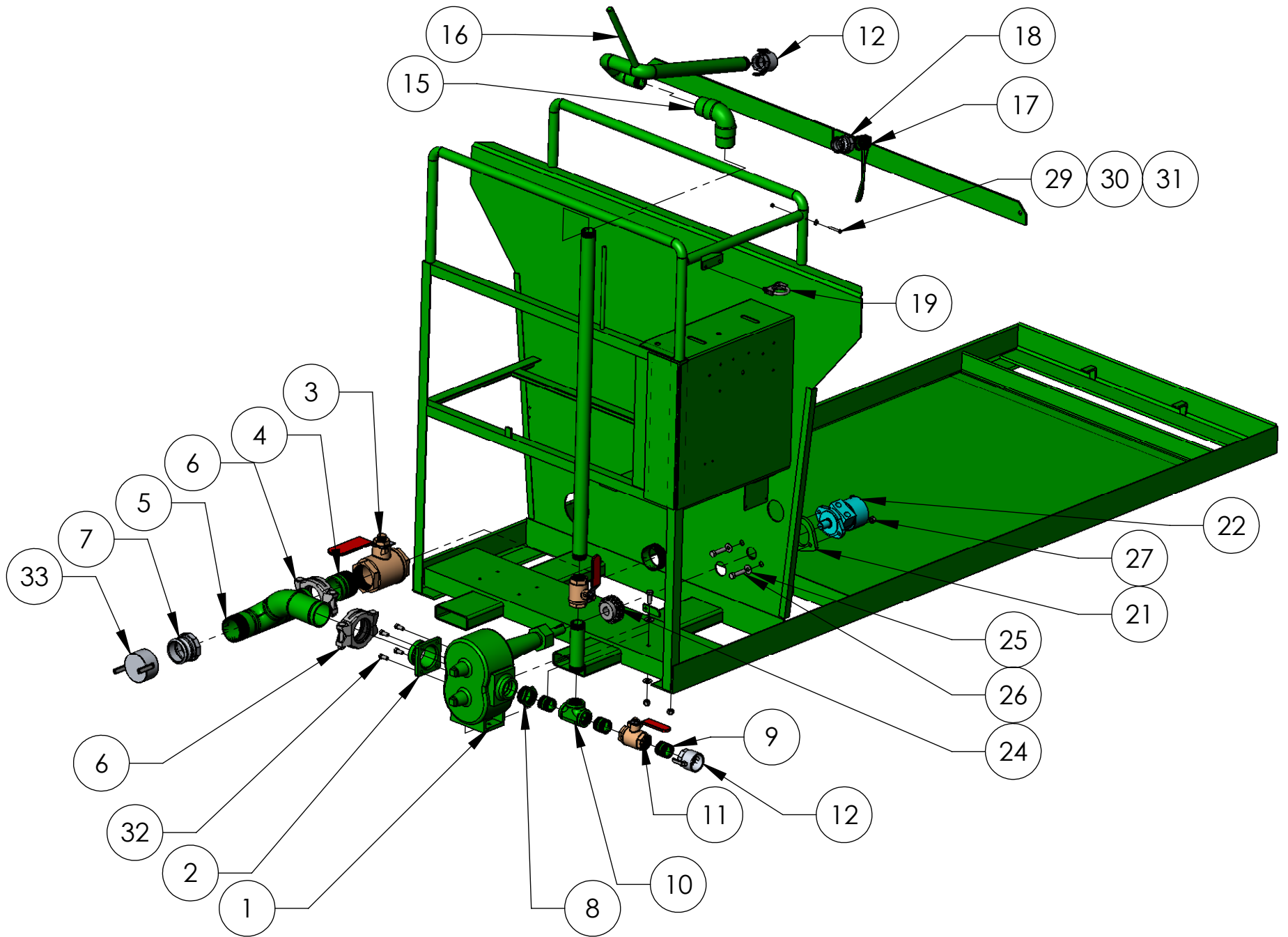
SCALE:1:48

SIZE: **A**

SHEET 6 OF 6

PROPRIETARY AND CONFIDENTIAL

THE INFORMATION CONTAINED IN THIS
DRAWING IS THE SOLE PROPERTY OF
TGMI, INC. ANY REPRODUCTION IN
PART OR AS A WHOLE
WITHOUT THE WRITTEN PERMISSION OF
TGMI, INC. IS PROHIBITED.

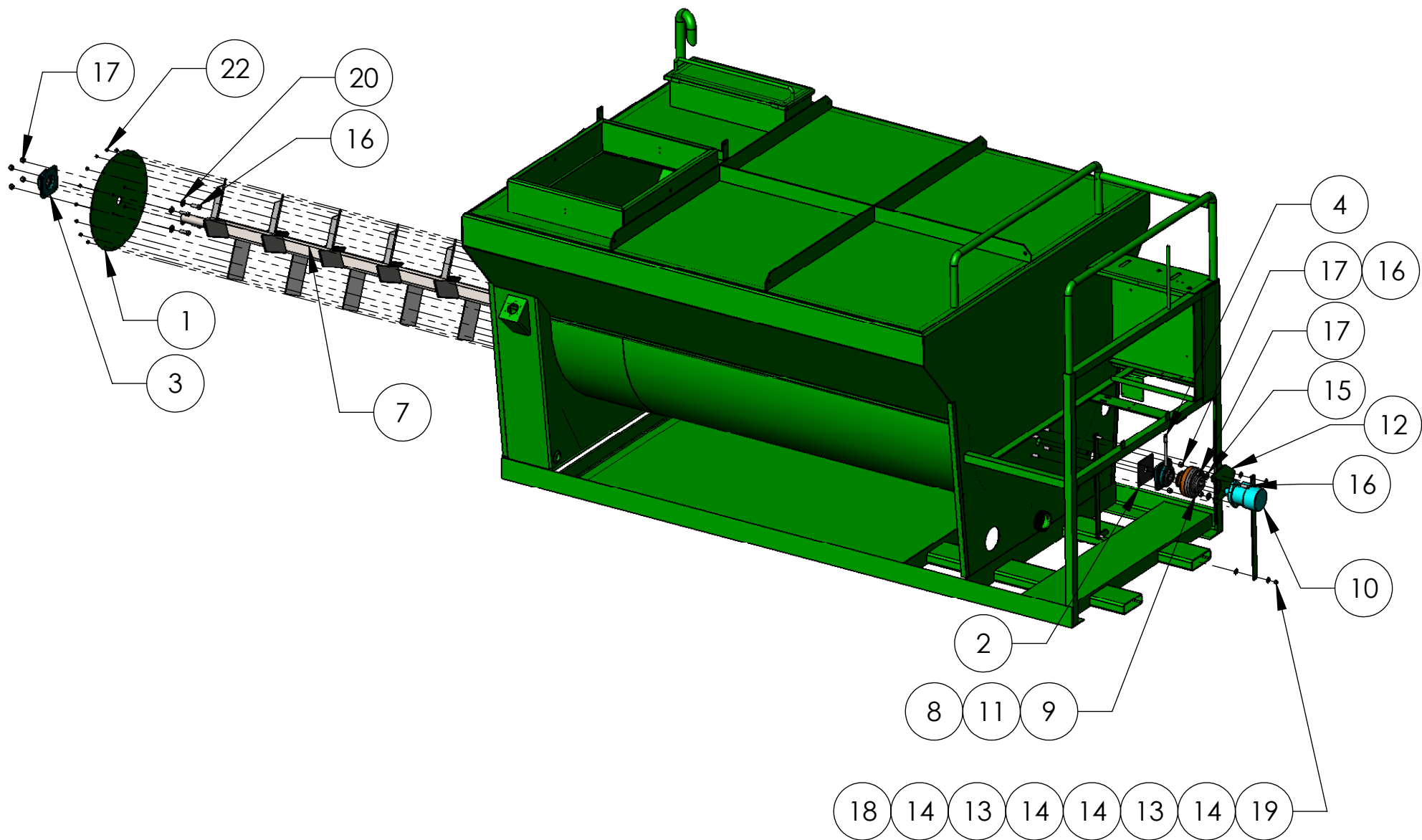


PROJECT:	ITEM NO.	Number	DESCRIPTION	BOM/QTY.	ITEM NO.	Number	DESCRIPTION	BOM/QTY.
	25	P10008	Washer, 1/2, Wide, ZP, GR6	6	1	P10114	Pump, Spray, Steel Gear	1
	26	P10067	Screw, Hex, 1/2-13x2.25, ZP GR5	2	2	W10044	Suction Flange, Aqua TGM	1
	27	P10009	Nut, 1/2-13, Nylock, ZP, GR5	4	3	P10097	Valve, 3" Brass, NPT	1
	28	P10007	Screw, Hex, 1/2-13x1.5, ZP GR5	2	4	10278	Pipe, 3" NPT x Groove, 3" LNG	1
	29	P10121	Screw, Hex, 1/4-20 x 2, ZP GR5	1	5	W10043	Suction Pipe, Aqua TGM	1
	30	P10010	Washer, 1/4, Standard, ZP, GR5	1	6	P10100	Coupling, 3" Pipe, Grooved-End	2
	31	P10036	Nut, 1/4-20, Nylock, ZP, GR5	1	7	P10105	Coupling, 3"FPT, Quick-Disc, Male	1
	32	P10115	Screw, Hex, 7/16-14x1, ZP GR5	4	8	P10116	Reducing, Bushing, 2NPT x 1 1/2FPT	1
	33	P10106	Coupling, 3", Quick-Disc, Female Cap	1	9	P10117	Pipe, 1-1/2"NPT, Close Nipple, BLK	3

	10	P10118	Pipe, 1-1/2"NPT, Tee, BLK	1
	11	P10096	Valve, 1 1/2" Brass, NPT	2
	12	P10108	Coupling, 1 1/2"FPT, Quick-Disc, Female	2
	13	10288	Pipe, 1-1/2"NPT Nipple, 7" LNG	1
	14	10289	Pipe, 1-1/2"NPT Nipple, 48" LNG	1
	15	P10119	Pipe, 1-1/2" NPT Swivel 90 Deg	1
	16	W10046	Cannon, 1-1/2 Pipe, Aqua TGM	1
	17	W10047	Cannon, Support Bracket, Aqua TGM	1
	18	P10107	Coupling, 1 1/2"FPT, Quick-Disc, Male	1
	19	P10122	Clamp, U Bolt, 2" ID	1
	20	10301	Key, 1/4 Sq x 1" LNG	1
	21	10302	Plate, Spacer, 2 Bolt Flange "A"	1
	22	P10130	Motor, Eaton 103-1538-012	1
	23	P10132	Key, Woodruff, 1/4	1
	24	P10133	Coupling, Chain/Sprocket, 1-1/8x1, 1/4 Keys	1

DRAWN:		TGMI, Inc. 955 West Prairie Drive Sycamore, IL 60178 (800) 241-8464	
DATE: Tuesday, July 26, 2011 10:02:00 AM			
MATERIAL: N/A			
WEIGHT: 236.971 lb		TITLE:	
UNLESS OTHERWISE SPECIFIED: DO NOT SCALE DRAWING		Assembly, Water Pump System	
DIMENSIONS ARE IN INCHES TOLERANCES ANGULAR: ±1° TWO PLACE DECIMAL ±.060 THREE PLACE DECIMAL ±.030 OVER 72.00 INCHES ±.12		ITEM NUMBER: A10026	
REMOVE ALL BURRS, BREAK EDGES .005 TO .015, MACHINING SURFACE 250 MICRO INCHES		REV: A	WC:
SCALE: 1:64		SIZE: A	SHEET 4 OF 4

PROPRIETARY AND CONFIDENTIAL
 THE INFORMATION CONTAINED IN THIS DRAWING IS THE SOLE PROPERTY OF TGMI, INC. ANY REPRODUCTION IN PART OR AS A WHOLE WITHOUT THE WRITTEN PERMISSION OF TGMI, INC. IS PROHIBITED.



PROJECT:

ITEM NO.	Number	DESCRIPTION	BOM/QTY.
1	10286	Plate, Cover Agitator, Aqua TGM	1
2	10287	Seal, Flange Bearing, 1-7/16	2
3	P10014	Bearing, Flange, 1-7/16, 4-Bolt	1
4	P10014	Bearing, Flange, 1-7/16, 4-Bolt	1
5	10083	Pipe, Nipple, 1/8NPT x 5"	1
6	10084	Pipe, Coupling, 1/8NPT	1
7	W10058	Shaft, TGM800, Agitator	1
8	10027	Key, 3/8 x 1-1/2	1
9	P10135	Coupling, Browning RS6P, 1-7/16 x1, Keyed	1
10	P10131	Motor, Eaton 103-1035-012	1
11	P10132	Key, Woodruff, 1/4	1
12	10303	Plate, 1/4" Adgitator Motor Mount	1
13	10304	Plate, 1/4" x 1 x 20, Support Bar	2
14	P10001	Washer, 3/8, Wide, ZP, GR5	8
15	P10008	Washer, 1/2, Wide, ZP, GR6	2
16	P10007	Screw, Hex, 1/2-13x1.5, ZP GR5	10
17	P10009	Nut, 1/2-13, Nylock, ZP, GR5	10
18	P10136	Screw, Hex, 3/8-16x1.5, ZP GR5	2
19	P10063	Nut, 3/8-16, Nylock, ZP, GR5	2
20	P10060	Washer, 1/2, Narrow, ZP, GR5	8
21	P10111	Screw, Hex, 5/16-18x3/4, ZP GR5	16
22	P10065	Nut, 5/16-18, Nylock, ZP, GR5	16

DRAWN:

DATE:

Tuesday, July 26, 2011 10:02:00 AM

MATERIAL: **N/A**

WEIGHT: **197.151 lb**

UNLESS OTHERWISE SPECIFIED:
DO NOT SCALE DRAWING

DIMENSIONS ARE IN INCHES
TOLERANCES

ANGULAR: $\pm 1^\circ$
TWO PLACE DECIMAL $\pm .060$
THREE PLACE DECIMAL $\pm .030$
OVER 72.00 INCHES $\pm .12$

REMOVE ALL BURRS, BREAK EDGES
.005 TO .015, MACHINING SURFACE
250 MICRO INCHES

TGMI, Inc.
955 West Prairie Drive
Sycamore, IL 60178
(800) 241-8464

TITLE:

Assembly, Agitator, TGM800

ITEM NUMBER:

A10030

REV:

A

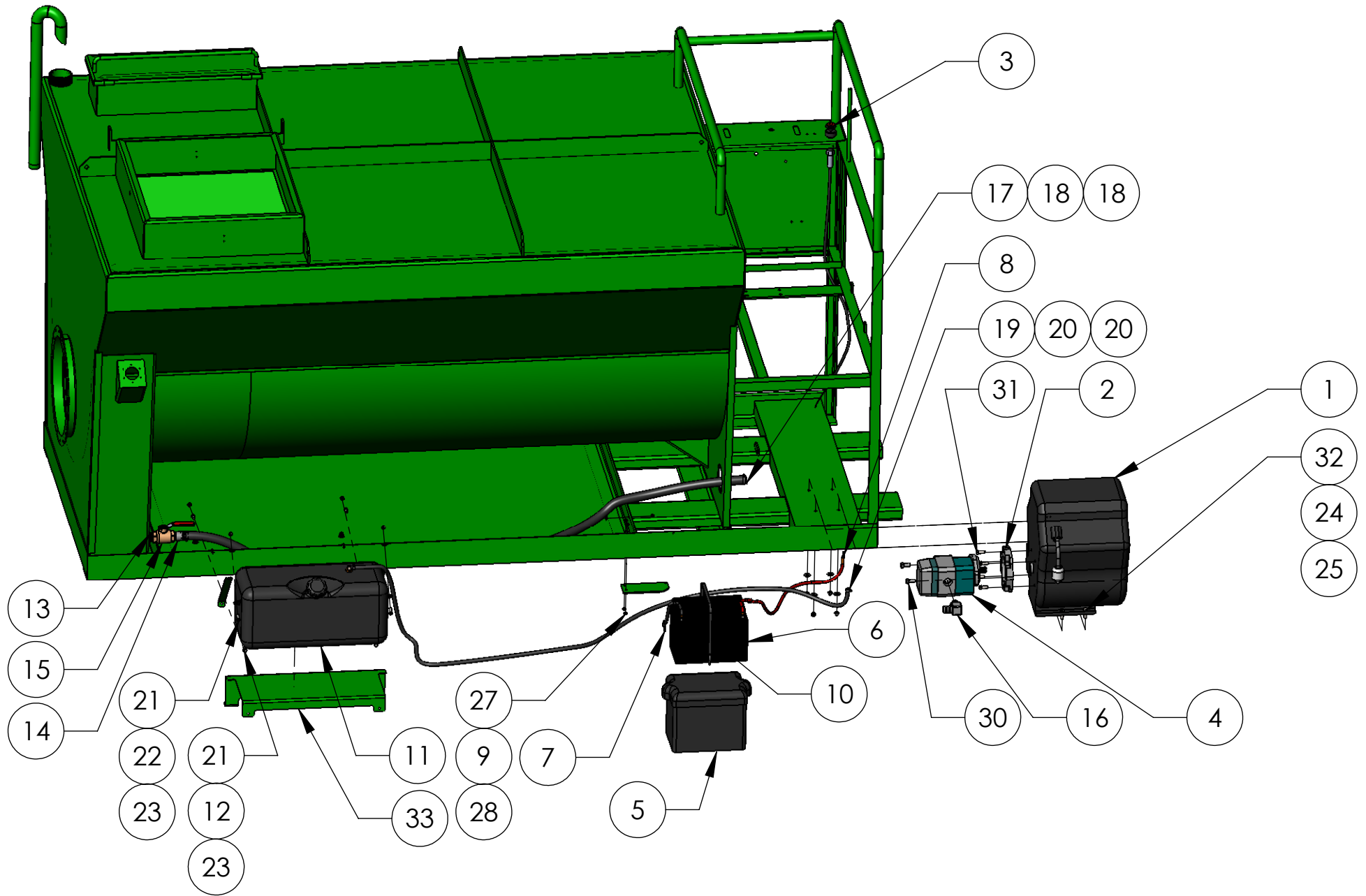
WC:

SCALE:1:96

SIZE: **A**

SHEET 4 OF 4

PROPRIETARY AND CONFIDENTIAL
THE INFORMATION CONTAINED IN THIS
DRAWING IS THE SOLE PROPERTY OF
TGMI, INC. ANY REPRODUCTION IN
PART OR AS A WHOLE
WITHOUT THE WRITTEN PERMISSION OF
TGMI, INC. IS PROHIBITED.



PROJECT:

ITEM NO.	Number	DESCRIPTION	BOM/QTY.	ITEM NO.	Number	DESCRIPTION	BOM/QTY.
				1	P10139	Engine, Kohler Command, Ch25	1
25	P10063	Nut, 3/8-16, Nylock, ZP, GR5	5	2	P10138	Adapter, Engine to Pump	1
26	P10010	Washer, 1/4, Standard, ZP, GR5	3	3	P10137	Cable, Vernier Control	1
27	P10026	Screw, Hex, 1/4-20x1.0, ZP GR5	5	4	P10086	PMP-HYD TANDEM GEAR	1
28	P10036	Nut, 1/4-20, Nylock, ZP, GR5	3	5	P10033	Battery, Cover	1
29	P10011	Nut, 1/4-20, ZP, GR6	2	6	P10047	Battery, Interstate, 12V	1
30	P10058	Screw, Hex, 1/2-13x1.5, ZP GR5	2	7	P10048	Battery, Cable, 12"	1
31	P10140	Screw, Hex, 3/8-16x1.0, ZP GR5	4	8	P10149	Battery, Cable, 36" Red	1
32	P10068	Screw, Hex, 3/8-16x1.25, ZP GR5	4	9	10312	Plate, 7ga x 3 x 7, Battery Anchor	1
33	10342	Plate, Formed, 11ga, Tank Platform	1	10	P10055	Strap, Rubber, 18"	1
				11	P10150	Tank, Fuel, Rectangle Plastic	1
				12	10341	Plate, Formed, 12ga x 1x8, Tank Sprt	2
				13	P10152	Pipe, 1" Nipple, Close	1
				14	P10153	Pipe, Barb 1" NPT x 1" Hose	1
				15	P10095	Valve, 1" Brass, NPT	1
				16	P10166	Fitting, Adapter 90Deg, #16ORB x 1BRB	1
				17	10343	Hose, 1" HYD Suction, TGM800	1
				18	P10174	Clamp, Hose, SAE#20, Worm Drive	2
				19	10344	Hose, 1/4" Fuel, TGM800	1
				20	P10175	Clamp, Hose, SAE#4, Worm Drive	4
				21	P10111	Screw, Hex, 5/16-18x3/4, ZP GR5	8
				22	P10064	Washer, 5/16, Wide, ZP, GR5	4
				23	P10065	Nut, 5/16-18, Nylock, ZP, GR5	8
				24	P10001	Washer, 3/8, Wide, ZP, GR5	5

DRAWN:		TGMI, Inc. 955 West Prairie Drive Sycamore, IL 60178 (800) 241-8464	
DATE: Tuesday, July 26, 2011 10:02:00 AM			
MATERIAL: N/A			
WEIGHT: 2685.917 lb		TITLE:	
UNLESS OTHERWISE SPECIFIED: DO NOT SCALE DRAWING		Assembly, Power, K25HP, TGM800	
DIMENSIONS ARE IN INCHES TOLERANCES ANGULAR: $\pm 1^\circ$ TWO PLACE DECIMAL $\pm .060$ THREE PLACE DECIMAL $\pm .030$ OVER 72.00 INCHES $\pm .12$		ITEM NUMBER: A10031	
REMOVE ALL BURRS, BREAK EDGES .005 TO .015, MACHINING SURFACE 250 MICRO INCHES		REV: A	WC:
SCALE: 1:48		SIZE: A	SHEET 4 OF 4

PROPRIETARY AND CONFIDENTIAL
 THE INFORMATION CONTAINED IN THIS DRAWING IS THE SOLE PROPERTY OF TGMI, INC. ANY REPRODUCTION IN PART OR AS A WHOLE WITHOUT THE WRITTEN PERMISSION OF TGMI, INC. IS PROHIBITED.